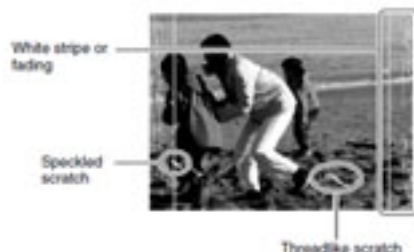



If defects such as white stripes, fading, or scratches begin to appear in printouts, you may need to clean the thermal head and rollers. In particular, white stripes and lines tend to appear when using the 2UPC-C14 series or 2UPC-C48 series printing pack after printing a large quantity of prints with the 2UPC-C13 or 2UPC-C15 series printing pack.




You can check whether cleaning is necessary in the confirmation screen for the remaining ink ribbon. To display the confirmation screen, touch the top right corner of the Start Guide screen twice (in succession). If cleaning is necessary, a message will appear. If this occurs, touch the  button to begin cleaning.



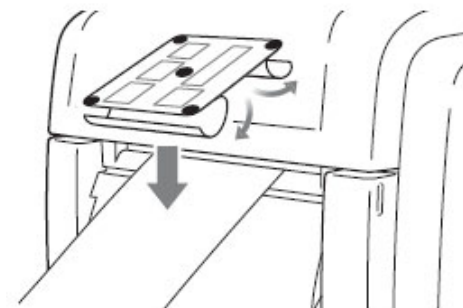
The cleaning cartridge is reusable, do NOT throw it away. The cleaning sheet is NOT reusable. Discard it after its first use. If there is insufficient print paper to complete the cleaning process, you may get an error. If this occurs, replace the print paper and begin the cleaning process again.

To clean the printer:

1. Touch the  button.
2. Enter the administrator password.
3. Remove the paper tray.
4. Check the remaining amount of print paper.
5. Open the side door, and remove the ink ribbon cartridge.
6. Load the cleaning cartridge into the printer, and close the side door.
7. Touch the [OK] button in the message.
About 30 cm of print paper emerges, and a message asking for confirmation to begin cleaning appears on the screen.

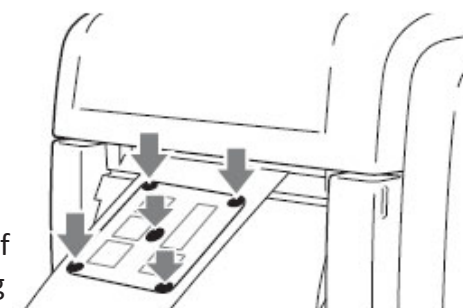
8. Remove the paper from the back side of the cleaning sheet (the side without an illustration).

Be careful not to confuse the back and front sides of the cleaning sheet.

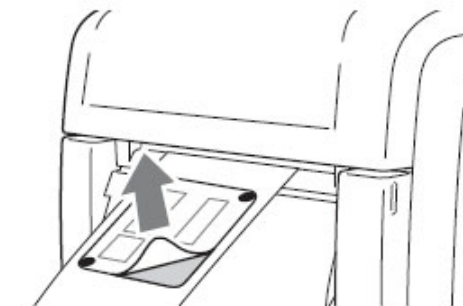


9. Determine by the width of the print paper the orientation to affix the cleaning sheet, and affix the cleaning sheet evenly and squarely onto the ejected paper as illustrated.

When using the 2UPC-C14/C48 series printing pack, orient the cleaning sheet lengthwise rather than crosswise. Firmly affix the entire cleaning sheet so that the corners do not peel up and the center is not raised. If the corners of the cleaning sheet peel up, cleaning may not be performed properly.



10. Remove the paper from the front side of the sheet.



11. The adhesive surface of the cleaning sheet is exposed now, so check again to make sure that none of the corners have peeled up and the center has not been raised.

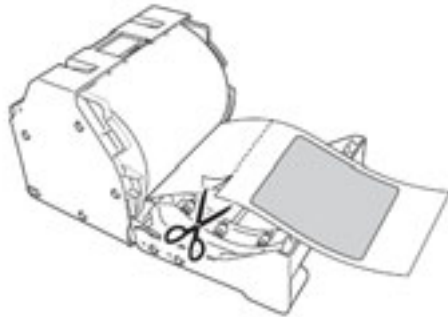


2UPC-C14/C48 series

2UPC-C13/C15 series

12. Touch the [OK] button in the confirmation message.
Cleaning begins. The print paper is drawn into and then reemerges from the eject slot, which removes any foreign particles and grime inside the printer. When cleaning finishes the print paper is cut several times.
13. Open the side door and remove the cleaning cartridge.

After cleaning is finished, make sure the cleaning sheet is completely ejected. If any part of the cleaning sheet remains on the print paper, remove the paper holder and cut off all remainders before using the printer.



Cleaning the Thermal Print Head



You must **wait a minimum of 5 minutes** before cleaning the Thermal Head to avoid severe burn injuries.

If after cleaning you still notice white stripes, fading or scratches, you may need to clean the thermal head directly.

1. Moisten the swab with an alcohol pad.
2. Carefully reach into printer to run the swab over the thermal head.
3. Be sure to move the swab in a back and forth motion across the head. Use a slight pressure where you may feel some debris on the head.



Be careful not to drop the swab in the printer itself. If the swab should fall in the printer, and you cannot easily retrieve it, it will be necessary to take the printer apart to remove the swab.

DNP

SL10 printer cleaning kit

The DNP Printer Cleaning Kit for the SL series printers provides you with the materials necessary to properly maintain your printer for approximately 4 cleaning sessions.

The kit consists of:

- canned air
- alcohol pads
- cotton swab



Please see inside for cleaning instructions.

Pre-Saturated Wipes and Clean-Penn: Isopropyl alcohol is flammable. Contact with the alcohol can cause irritation to the eyes. In case of contact with the eyes, flush with water for at least 15 minutes. Always use isopropyl alcohol with proper levels of ventilation. In case of ingestion, consult a physician immediately.



Reducing Exposure

Where possible, enclose operations and use local exhaust ventilation at the site of chemical release. If local exhaust ventilation or enclosure is not used, respirators should be worn.

Wear protective work clothing.

Wash thoroughly immediately after exposure to Isopropyl Alcohol and at the end of the work shift.

Post hazard and warning information in the work area. In addition, as part of an ongoing education and training effort, communicate all information on the health and safety hazards of Isopropyl Alcohol to potentially exposed workers.